

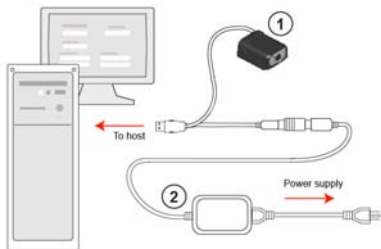
MS-4 EZ Match - CONFIGURATION



MICROSCAN

USB (5V)

This is the basic setup for a single USB MS-4 EZ Match. The MS-4 EZ Match is connected directly to a host computer.

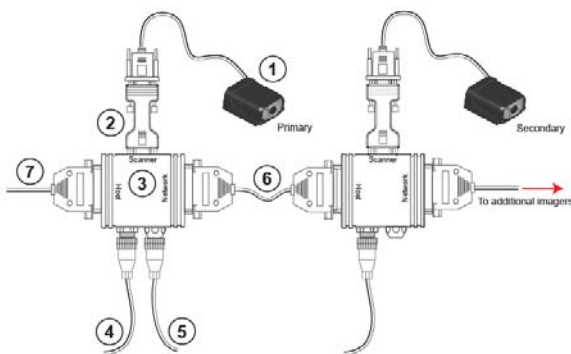


System Matrix

Product	Part Number	Description
(1) MS-4 EZ Match	FIS-0004-11XXG	Imager, USB
(2) Power Supply	97-000002-01 (One included free with MS-4 EZ Match)	90-264 VAC, +5VDC

Daisy Chain (24V)

A primary imager is linked directly to the host. Secondary imagers are linked in tandem. Data is sent from each secondary imager to the primary imager, and from the primary imager to the host.

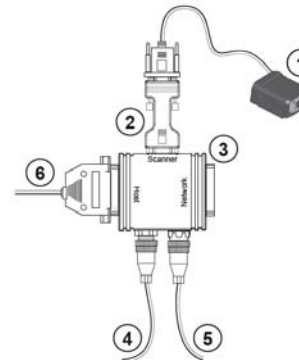


System Matrix

Product	Part Number	Description
(1) MS-4 EZ Match	FIS-0004-11XXG	Imager
(2) IC-332	FIS-0001-0035G	Voltage converter (to 10-28V)
(3) IB-131	99-000018-01	Interface Box
(4) Power Supply	97-100004-15	90-264 VAC, 24VDC, USA/Euro plug
(5) Object Detector (optional)	99-000017-01	Photo Sensor, Visible, NPN, Dark On
(6) Daisy Chain Cable	61-100029-03	IB-131 to IB-131, 1 ft.
(7) Communication Cable	61-300026-03	25-pin plug to 9-pin socket

Stand-Alone (24V)

This is the basic 24-volt setup for a single MS-4 EZ Match.

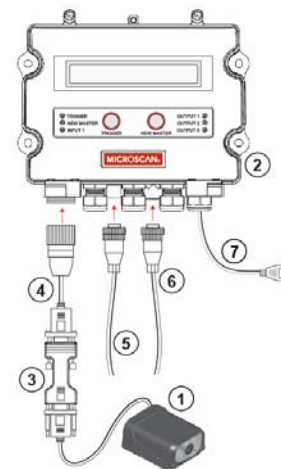


System Matrix

Product	Part Number	Description
(1) MS-4 EZ Match	FIS-0004-11XXG	Imager
(2) IC-332	FIS-0001-0035G	Voltage converter (to 10-28V)
(3) IB-131	99-000018-01	Interface Box
(4) Power Supply	97-100004-15	90-264 VAC, 24VDC, USA/Euro plug
(5) Object Detector (optional)	99-000017-01	Photo Sensor, Visible, NPN, Dark On
(6) Communication Cable	61-300026-03	25-pin plug to 9-pin socket

Stand-Alone with MS-Connect 200 (24V)

This is the basic setup for a single MS-4 EZ Match and an MS-Connect 200 Connectivity Box.



System Matrix

Product	Part Number	Description
(1) MS-4 EZ Match	FIS-0004-11XXG	Imager
(2) MS-Connect 200	FIS-0200-000XG	Connectivity Box
(3) IC-332	FIS-0001-0035G	Voltage converter (to 10-28V)
(4) Reader Cable	61-000102-01	MS-4 EZ Match to MS-Connect 200 cable, 3 ft.
(5) Power Supply	97-100004-15	90-264 VAC, 24VDC, USA/Euro plug
(6) Object Detector (optional)	99-000017-01	Photo Sensor, Visible, NPN, Dark On
(7) Host Cable	61-000105-01	MS-Connect 200 to host, user-stripped to 9-pin (included)